



S-Series Pressure / Twin Sheet Shuttle Thermoformer



AL90 Clamp Frames



Energy Efficient Oven Controls



Heavy Duty Platen System



Sheet Load - Unload

Uncompromising Performance and Detail

The most precise and repeatable multi-station pressure and twin sheet shuttle equipment available. A horizontal sheet car indexes the cut-to-size sheets through load/unload, heat and form stations.

In addition to the variety of forming processes on the vacuum equipment, these machines provide the addition of pressure, twin sheet and in-mold trimming capabilities to produce thermoformed products with extreme detail, faster cycle times and complex configurations.

High Pressure Models with non-proprietary computerized control, high speed electric direct drive platen systems, air bag or hydraulic squeeze system, precisely located bayonets, high watt density energy efficient ovens and controls, electric shuttle car, multiple clamp frame options and high flow pneumatics are available to your exact specification.

Ultimate Pressure models provide even lower deflection at higher pressure for the ultimate in product detail and flatness.

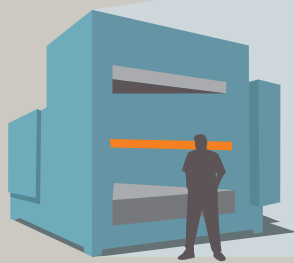
Safety:

- Perimeter guarding designed to provide high visibility with light curtains in the load / unload area
- Electrical interlocks on guards requiring frequent access
- Bilingual with pictographic safety tags
- Main electrical disconnect with padlock
- Emergency stop buttons
- All safety features should be in place and functional at all times

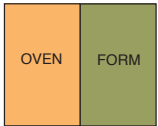
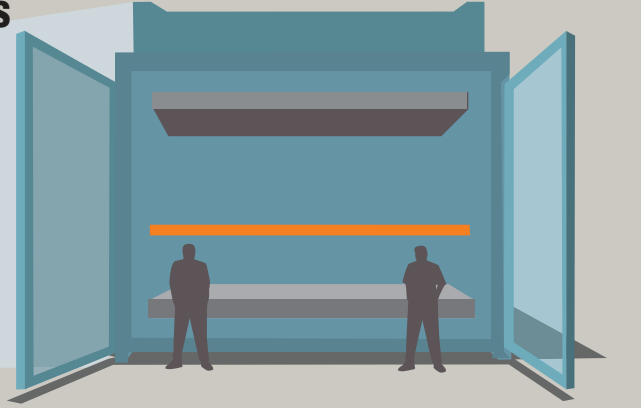
S-Series Pressure / Twin Sheet Machine Options:

- 8", 10" or 12" per second Platen Systems
- Upper and Lower Platen Strokes from 15" to 96"
- High Efficiency Mold Clamp
- Air Bag or Hydraulic Pressure Squeeze Systems
- Motorized Bayonet Adjust System
- High Output Blower and Fan Systems
- Multiple Zone Color Changing Ceramic, Quartz or Panel Heater Elements
- Solid State Relay or Heater Control Module Oven Control
- Oven Fire Protection Sheet Curtain System
- IR Sensor and Sheet Scanning Systems
- Motorized or Sheet Tracking Lower Ovens
- Servo Position Vacuum and Air Valves
- Vacuum Pumps and Temperature Controllers
- Pin Bar / Aluminum Extrusion or AL-90 Quick Change Clamp Frames
- Lift Table Systems
- Automatic Sheet Load and Unload Systems
- Sensors and Trending Capabilities
- Mold Change Quick Change Systems
- UL / CE / CSA / HSE Approval Available
- International Voltages Available
- Air Conditioned Electrical Cabinets
- Spare Parts Kits
- Start-Up and Training
- Custom Options

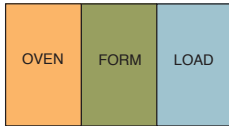
Machine sizes to meet your requirements



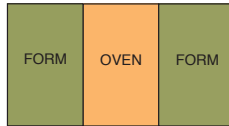
Brown builds thermoformers in mold sizes from 3' x 4' up to 14' x 22', and will build them even larger.



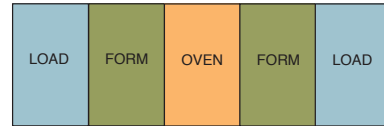
S-222



S-223



DE423



DE 425

Leadership Through Innovation, Quality and Service

Serving the thermoforming industry since 1952, Brown Machine has earned a reputation for providing the most innovative, durable and dependable plastics equipment in the industry. With engineering and manufacturing capabilities in Beaverton, Michigan, Brown provides equipment, tooling and services to produce a wide range of thermoformed products in the following markets:

- Disposable Cup
- Food Packaging
- Housing
- Point-of-Purchase Packaging
- Material Handling
- Horticultural
- Automotive
- Lid and Plate
- Recreation Equipment
- Appliance

Today our equipment is producing products from a wide range of materials including:

- Polystyrene
- Polyethylene
- PVC
- Composites
- Polypropylene
- EPS Foam
- TPO
- Acrylic
- APET
- ABS
- Barrier Materials

Globally, Brown Machine totally supports its growing capital equipment business with a full complement of:

- Retrofit Kits
- Service: 24-7
- Remanufacturing
- Parts: 24-7

Continuous Thermoformers

Cut Sheet Thermoformers

Horizontal & Vertical Trim Presses

Lip Rolling Systems

Machines for Custom Applications

Tooling, Parts & Service



Global Leader in Thermoforming Solutions

World Headquarters: Brown Machine LLC, 330 N. Ross St. Beaverton, Michigan 48612, USA

Ph: 989.435.7741

sales@brown-machine.com

www.brown-machine.com

TF: 877.702.4142

A global leader of thermoforming technologies since 1952, Brown Machine LLC engineers and builds a complete standard line of continuous & cut-sheet thermoforming equipment as well as related tooling & peripheral equipment.

Fx: 989.435.2821